



1658 Beekman Place NW #B

Washington, DC



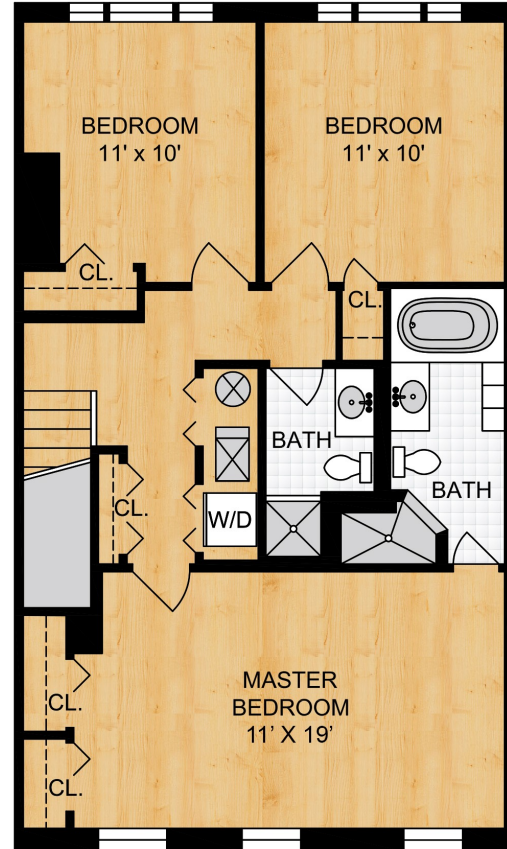
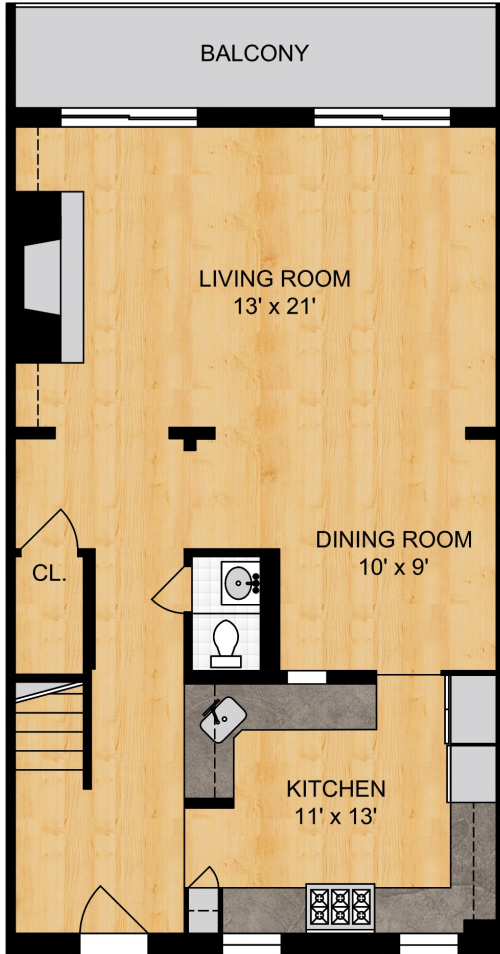






Property Improvements

- ◇ New Carrier AC and heating system (whole system replacement, including air handler) — 2015
 - ◇ New large capacity water heater— 2015
 - ◇ New Kitchenaid dishwasher— 2017
 - ◇ Installed ceiling heater in master bathroom — 2015
 - ◇ Added new electrical circuit for full-size, front-loading washer and separate dryer— 2015
-



Estimated Total Square Footage 1582, per 3rd party

Tucked away inside the sought-after gated community of Beekman Place, this upper level three-bedroom two-and-one-half-bath two-floor condominium home with private entrance is ideally located in Beekman's coveted and quiet middle row removed from the hustle and bustle of 16th Street and Florida Avenue.

Offering a floor plan unique to the community, 1658B features a lay-out that is truly a chef's and entertainer's delight. The kitchen opens to the surrounding living areas and benefits from easily twice as much cabinet storage and countertop space for dicing and slicing than the competition. Add-in stainless steel appliances including a double oven and this kitchen rivals that of any house.

The living room replete with wood-burning fireplace and built-in bookshelves is bright and airy thanks to two sets of sliding glass doors both offering access to the double-wide balcony. With views that stretch to the horizon and include the Washington Monument, the private balcony is the ideal place to enjoy the July 4 fireworks, unwind with a glass of wine after work, or relax with friends on the weekend.

On the second floor, 1658B boasts three bedrooms, a large linen closet, and full-size, front-loading washer as well as separate full-size dryer. The spacious and serene master bedroom with tree-top views through three windows has two closets and an expanded ensuite bathroom including a jacuzzi tub and separate shower with two shower heads. Also upstairs are two additional bedrooms each with a large triple window and sweeping views of the City.

1658 Beekman Place NW #B | 3 BED | 2.5 BATH | Condo Fee \$620 | Annual Taxes \$5974 | Offered at \$949,000

Information deemed reliable, but not guaranteed.

Relax at home in the comfort of your spacious condominium or take advantage of 1658B's prime location, offering easy access to the best of D.C. from Meridian Hill Park to the restaurants of U St and 14th St. These are just a few of the favorite places and conveniences enjoyed by the owners.



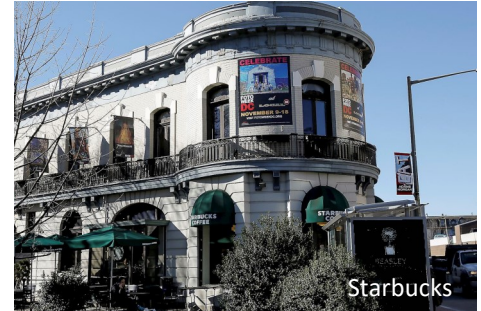
Meridian Hill Park



The LINE Hotel



Marie Reed Playground and Courts



Starbucks



ROCHELLE RUBIN
REALTOR - ATTORNEY - CONSULTANT

rr@RochelleRubin.com
rochellerubin.com

202.316.5591 (m)
301.654.3200 (o)



Stuart & Maury
REALTORS®

This is not intended to solicit the listings of other agents.