

6015 Overlea Road

Bethesda, MD 20816

For Sale

\$1,199,000



Represented By

Robert Jenets

President & Principal Broker



301.257.3200



**Stuart &
Maury**
REALTORS®

Serving Bethesda, Chevy
Chase and DC since 1956!



Real property tax and other non-tax charges to be expected in the first fiscal year of ownership are \$12,592.91

House built in 1968

Lot size: 9,163 sq. ft.

Total finished living area approximately: 3,847 sq. ft.

Woodacres Elementary

Pyle Middle School

Walt Whitman High

5 Bedrooms

3 and a 1/2 Baths

FANTASTIC VALUE!

Life along the Massachusetts Avenue corridor is good, and those of us who live here find it to be just the right blend of suburban life with close-in convenience. Enjoy the arts and crafts at **Glen Echo Park**, take a leisurely walk along the **C&O Canal** towpath or bike about a short half mile to the **Crescent Trail** and ride into thriving downtown Bethesda or all the way to Georgetown. Shopping at the Little Fall Mall is only two blocks away. Excellent!

Main Level





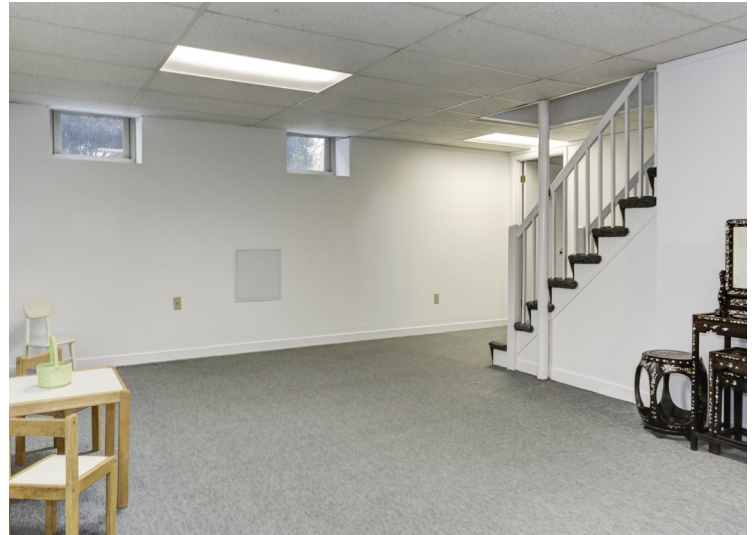
This handsome Miller-built colonial is perfectly designed for elegant entertaining and casual everyday living. The gracious formal living room has a handsome fireplace and French doors that let in an abundance of natural light and open onto the level grassy back yard which is fully fenced. Adjacent to the dining room and the kitchen is an enormous family room highlighted by a gorgeous stone fireplace, flanked by high quality cherry cabinetry and shelving. This room also has lots of light and access to the rear garden. A powder room rounds out the main level floor plan. There are four generous bedrooms on the second level along with two baths and the lower level offers a huge recreation room, the fifth bedroom, the third full bath, the utility/storage room and a two car garage. SO MUCH HOUSE!



Upper Level



Lower Level



Sumner has a stellar reputation as one of the most desirable areas of Bethesda, known for the variety of stately and stylish homes lining its shady neighborhood streets. The atmosphere in Sumner is friendly and there is a spirit of community that makes people proud to live here. Development began in 1948 by the W.C. & A. N. Miller Company which had a fine reputation for its earlier communities of Wesley Heights and Spring Valley, and continued steadily through 1971. A later phase was built during the 1980's and the neighborhood was complete by 1990. The builders were careful to vary the design and style of the homes to have character but never the "cookie cutter" appearance of a tract development. Owning a home in Sumner gives you more than just a building with some rooms in it – you get the warm feeling of belonging that comes with being part of a wonderful tradition that has been carefully nurtured by its residents for a very long time. It's an excellent place to live and you will love it! Enjoy your visit!