

# Glen Mar Park

5910 WALHONDING ROAD  
BETHESDA, MD 20816  
\$899,000



## *FAMILY KEEPSAKE*

Rare one owner, center entrance brick colonial situated on a 10,335 sf lot in very desirable Glen Mar Park! Generous center foyer entrance, Large, front to back living room with wood burning fireplace, screened porch off living room with views of rear yard, separate dining room, family room with additional wood burning fireplace, Table space kitchen with white cabinets, ceramic tiled floor and updated appliances, powder room off foyer, and den/office with built-in bookshelves. Upper level includes four well-proportioned bedrooms, two full baths with tub/shower combinations, and ample closet space in each bedroom. The lower level is finished with a recreation room, bedroom, full bath, laundry room and utility/storage room.

This home features quality home construction from a by gone era including 4 sides of brick, masonry fireplaces, oak hardwood floors on main and second floors, marble foyer, 1 car over-sized garage with just installed insulated door, newly installed architectural shingle roof, freshly painted interior and all exterior trim, off street parking for 3+ cars. Whitman Schools! Truly a special offering at this price!



**Kevin Cullinane**

Cell: 301-312-1815  
KCullinane1@aol.com



4833 Bethesda Avenue Suite 200  
Bethesda, MD 20814  
Office: (301) 654-3200

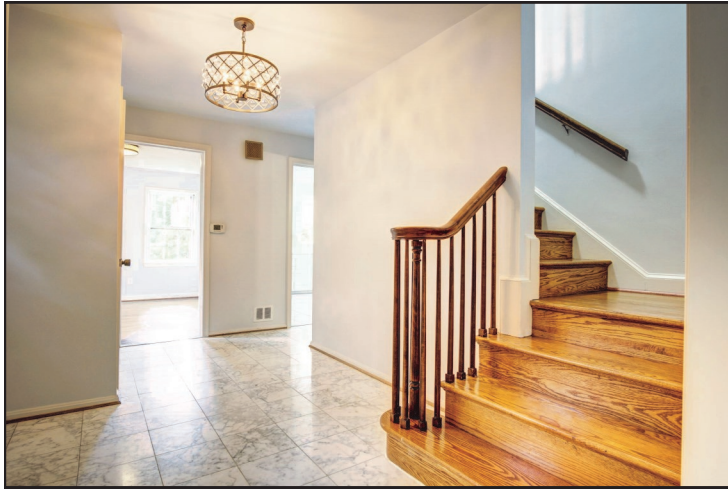
*All information deemed reliable, not guaranteed.*



**Stuart &  
Maury, Inc.**  
Realtors



# 5910 WALHONDING ROAD | BETHESDA, MD 20816



## Legal Information

- Tax ID: 160700561531
- Legal: Lot: 34/ Block: 2
- 2019 Taxes: \$10,463
- Year Built: 1965
- Lot Size: 10,335 square feet
- Acres: .237



**Kevin Cullinane**

Cell: 301-312-1815  
KCullinane1@aol.com



4833 Bethesda Avenue Suite 200  
Bethesda, MD 20814  
Office: (301) 654-3200

*All information deemed reliable, not guaranteed.*



**Stuart &  
Maury, Inc.**  
Realtors