

This Georgian Colonial with English bond brick work on main exterior walls, jack arches over the window lintels, slate hip roof and copper gutters exudes the quality of a bygone era in home construction. Oak hardwoods, plaster walls, center hall entry with curved staircase to upper level, and marble fireplace surround continue this theme throughout the interior of this home. First floor has two notable expansions, including expansion and renovation of kitchen, as well as finishing of side porch into finished sun room with four insulated sliding glass doors, which welcome in gentle breezes! The interior continues to feature abundant air, light and space! The 11,873 square foot lot provides a generous, fenced rear yard, with curb cut and access from Onondaga Road. Front yard has a large circular driveway which eases ingress/egress and multi-car off street parking.

**Property Details**

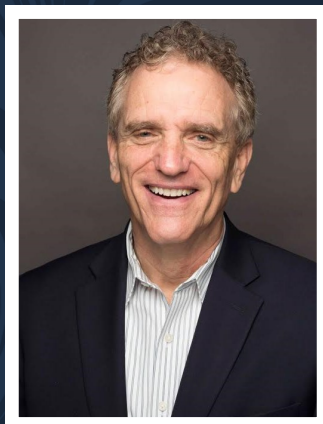
4 Bedrooms/3 Full and 1 Half Bath  
 Year Built 1943, updated during the lifespan and by current owner.  
 Lot Size: 11,873 sq. ft.  
 Est. Taxes: \$10,529 per yr  
 Woodacres Elementary (K-5)  
 Pyle Middle School (6-8)  
 Whitman High School (9-12)

Matthew Maury has sold over \$900,000,000 in career sales, spanning over 38 YEARS.

Cell: 301-928-8686

Email: [mathew@matthewmaury.com](mailto:mathew@matthewmaury.com)

Website: [www.MatthewMaury.com](http://www.MatthewMaury.com)



**6016 MASSACHUSETTS AVENUE  
 BETHESDA, MD. 20816**



Matthew Maury & Kevin Cullinane

Stuart & Maury, Inc. Realtors

Office: 301-654-3200  
 Cell: 301-928-8686 & 301-312-1815  
 Fax: 301-656-6182  
[Matthew@MatthewMaury.com](mailto:Matthew@MatthewMaury.com)  
[Kcullinane1@aol.com](mailto:Kcullinane1@aol.com)



HOME FOR SALE

6016 MASSACHUSETTS AVENUE



All information deemed reliable, but not guaranteed.

**\$995,000**





## Features

### Living room (12" x 26')

With wood-burning fireplace, wood mantle, crown molding, marble fireplace surround, oak hardwood floors and plantation shutters.

### Dining room (13' x 15.5')

With crown molding, wide opening to Living Room creating circular flow, hardwood floors and light filled windows, plantation shutters and views of rear yard.

### Den/Library (12' x 11')

Faux raised wood panels, hardwood floors, Large built in with drawers and wardrobe capacity, plantation shutters and adjoining half bathroom.

### Kitchen (18' x 8.5')

Uba Tuba granite countertops, recessed lighting, maple cabinets stainless steel sink, stainless steel Kitchen Aid dishwasher, GE Disposal, Stainless steel four burner GE Profile gas range/oven with warming drawer, GE Profile Microwave, GE Refrigerator, built-in desk area, pantry, and adjoining breakfast room

### Breakfast Room (11.4" x 12")

Recessed lighting with sliding glass door to rear wood deck.

### Sun Room (9.7" x 16")

Perfect for casual entertaining, secondary office; with sliding glass doors, ceiling fan, and wood paneled ceiling.

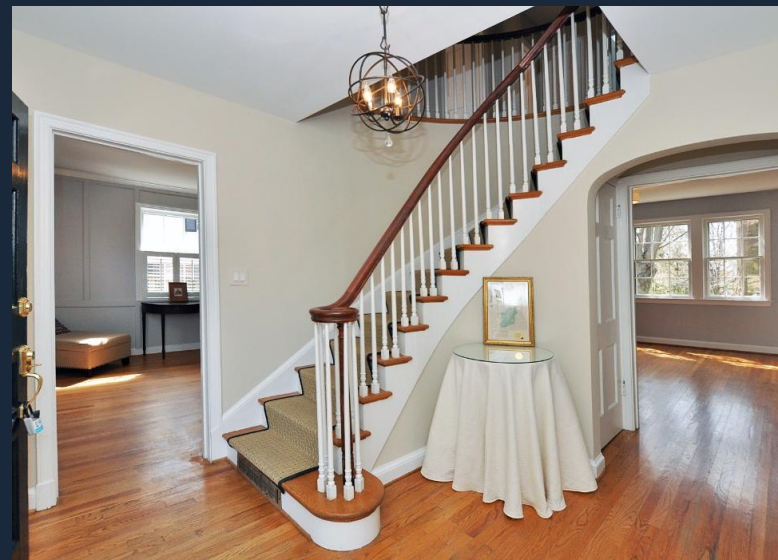
### Lower level

The lower level offers great flexibility. It is comprised of a bedroom suite, with its own private full bathroom. This is accessible from the exterior as well, with a daylight, area way stairwell exit that leads to rear yard. In addition, the lower level has new paint and flooring, a large laundry room with storage cabinets and extra refrigerator. A large unfinished storage room approximately (12' x 26') with freshly painted floor and walls offers exceptional, easily accessible storage or is ready to accept finishing into family room!

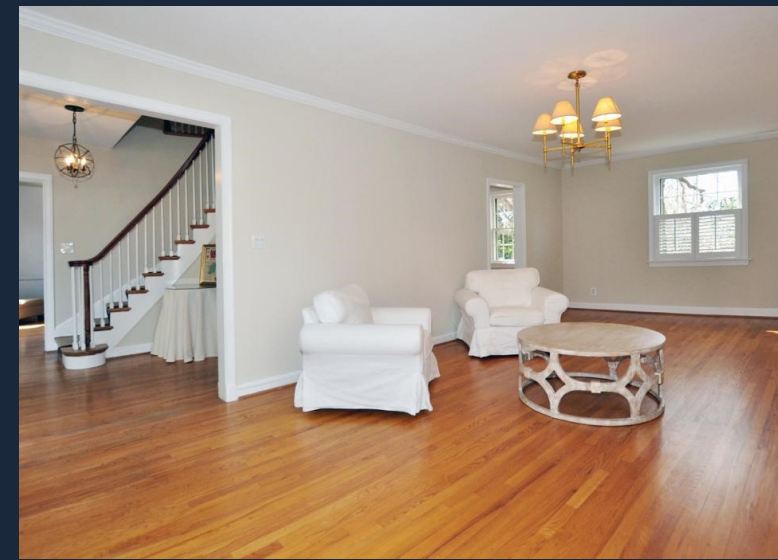
The bedroom approximately (12' x 11') at widest points has a large closet and window, with new tile flooring .

The laundry area features a washer and dryer, cabinetry and refrigerator and window.

The full bath includes a tile shower, has been remodeled, and a rear yard window.



Foyer



Living Room



Dining Room



Kitchen



Sun Room



Master Bedroom

### Master Bedroom (26' x 12')

Ceiling fan, four sparkling clean windows full of light, closet, and access to private ceramic tile bathroom.

### Master Bath

With shower, upgraded toilet and vanity. Decorative light fixture.

**Bedroom 2 (over den)** Closet. Ceiling fan, two windows that gather plentiful light, and hardwood floors.

**Bedroom 3 (back left over Kitchen)** with closet. Two rear and side facing windows, and ceiling fan.

### Hall bath

Freshly painted, all ceramic, with full size window offering rear yard views This bath has a bathtub.

Hall linen closet. Attic hatch access.

### Exterior

In addition to the covered patio and deck, the backyard features a shed (as-is) pea gravel walkways, is fenced, and offers rear parking pad and curb cut, with off street parking for two additional cars! This is accessible off quiet Onondaga Road, which runs behind the property. Street parking is plentiful as well.

### Additional Information

The interior of the home was painted in 2019.

The Fireplace was extensively repaired and cleaned in 2015 by Winstons Chimney Service.

The Air conditioning compressor and Furnace were manufactured in 2012.

### A FEW WORDS ABOUT GLEN ECHO HEIGHTS...

The rolling terrain and the magnificent trees provide for a setting that is the equal of any community in Bethesda. But the community is more than brick and mortar. This is a community where people really do know their neighbors, where there is an intense pride in being part of a community. The homes are meticulously cared for and have weathered the decades gracefully. Nearby Wood Acres Elementary is adjacent to the 13 acre Park and was completely rebuilt brand new, re-opening in 2002. The school district of Walt Whitman High School and Thomas Pyle Middle School is one of the most sought after in the nation. The home is minutes from Glen Echo Park, C&O Canal and the Crescent Trail. And what's more – public transportation to the Friendship Heights Metro stop and downtown D.C. is at your doorstep.

Does it sound too good to be true? Ask anyone who lives in Glen Echo Heights. They will tell you how special it is!