



4301 Military Road, NW #407 • Washington, DC 20015

"Chase Point"



An incredibly desirable floor plan with a tranquil view overlooking greenspace combine to create a very special offering. Built in 2007 by PN Hoffman as the newest building in Friendship Heights, this luxury residence is the perfect blend of style and convenience. Some of the many features include 9.5-foot ceilings, refinished Brazilian cherry wood floors, sun-splashed floor-to-ceiling windows, an open floor plan, and custom designed built-ins. There is an owner's bedroom suite with luxury bath and walk-in closet, an additional bedroom and den, and a granite kitchen with island, stainless steel Viking appliances and new Subzero refrigerator. There are 2 oversized garage spaces that allow for easy parking. The building has a 24-hr front desk, friendly on-sight management and building services staff, fitness center, and common-area party room and patio. Surrounded by shops, restaurants, transportation and Metro, imagine the "lifestyle advantages" available while living at Chase Point. With the luxury amenities, wonderful staff and ideal location, Chase Point is an excellent opportunity in today's real estate market.



Scott Matejik

Vice President

"Your Neighborhood Expert with The Hometown Touch"

Office 301-654-3200
 Cell 301-442-8200
 Email Scott@ScottMatejik.com
 Website www.ScottMatejik.com

STUART & MAURY, INC.

4833 BETHESDA AVE STE# 200
 BETHESDA, MD 20814
 Office 301-654-3200
 Fax 301-656-6182







Features & Amenities

MAIN LEVEL

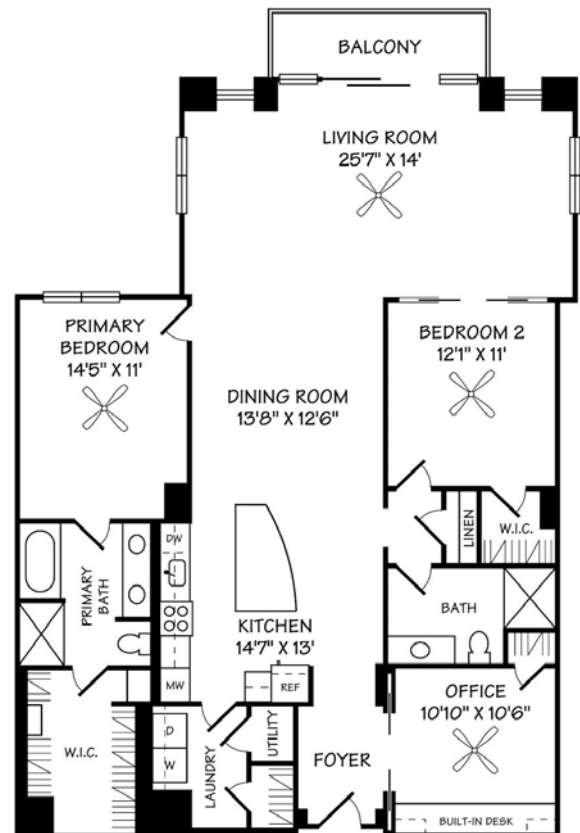
- **Entrance Foyer** with recessed lights
- **Living Room** with four floor-to-ceiling windows, ceiling fan, and sliding glass door to balcony overlooking greenspace
- **Dining Room** with chandelier and plenty of wall space
- **Kitchen** with breakfast bar and island, stainless-steel appliances including 2022 Sub-Zero refrigerator, Viking gas stove with hood, heat lamp, and fan, Viking dishwasher, Viking microwave, cherry wood cabinetry with soft-close and pullout drawers, under-cabinet lighting and wine rack, tile backsplash, granite countertops, and new pendant lighting
- **Primary Bedroom** with new carpeting, oversized windows, ceiling fan, walk-in closet with California Closets custom organizing system, and luxury bath
- **Primary Bath** with walk-in shower, separate tub, oversized vanity with double sink, toilet, large mirror, medicine cabinets, and tile floor
- **Bedroom #2** with new carpeting, closet, ceiling fan, and pocket doors opening to the living room
- **Hall Bath** with walk-in shower, vanity, large mirror, toilet, tile floor, and hall linen closet
- **Den/Office** with wall of custom designed built-ins (desk, shelving & drawers), closet, pocket doors, and ceiling fan
- **Laundry Room** with Bosch front-loading washer and dryer, shelving, storage closet, tile floor, and utility closet
- **Balcony** with plenty of space for a table and chairs



SPECIAL FEATURES

- Two Garage Spaces (#136 & #137) located on parking level 2 are extra-deep
- Custom window treatments and (4) ceiling fans with remote controls
- Newly refinished Brazilian cherry wood floors
- 9.5-foot ceilings and double-pane windows
- Gas furnace and hot water heater, electric central air conditioning
- Building has a 24-hour front desk, on-site management, building maintenance staff, fitness center, and party room
- One block to Metro and surrounded by restaurants, shops and activities of Friendship Heights
- Condo Fee is \$1,595.98 and covers gas, water & sewer, professional on-site management, reserve funds, common area maintenance, master insurance, common utilities, and parking

Price: \$1,289,000
Taxes: \$10,383/year
Builder Floor Plan: 1,711 Square Feet
Year Built: 2007
Schools: Murch ES, Deal MS, Jackson-Reid HS



UNIT 407
 9'5" CEILING

Scott Matejik

Vice President

"Your Neighborhood Expert with The Hometown Touch"

Office: (301) 654-3200 | Cell: (301) 442-8200

E-Mail: Scott@ScottMatejik.com

Website: www.ScottMatejik.com



Stuart & Maury
 REALTORS®

STUART & MAURY, INC.

4833 BETHESDA AVE STE# 200
 BETHESDA, MD 20814

All information is deemed reliable, but not guaranteed. If school districts are critical, please verify independently.

