



## 6010 Roosevelt Street • Bethesda, MD 20817

### *"Bradmoor"*

Welcome to this outstanding home which reflects the creativity, quality, and pride-of-ownership not often displayed by homeowners. The brick/stone exterior features extensive landscaping, hardscape patios/decks with fireplaces, exterior accent lighting, irrigation system, and gas generator. With over 6,400 finished sq ft and 5-6BR/4.5BA, the interior boasts custom touches including detailed moldings, extensive cabinetry, stone and woodwork, window treatments, decorative painting, and five fireplaces. The chef's kitchen features a 6-burner gas cooktop, double ovens, island with breakfast bar, cherry cabinetry, breakfast room, and work desk. The kitchen opens to a large family room with a gas fireplace and custom cabinetry. In addition, there is a main-level office, fun and whimsical living room, formal dining room with bay window, and direct entrance to a 2-car garage with Garage-Tek storage system. Upstairs, the 3-room owner's suite has a spacious bedroom area, adjacent sitting room with gas fireplace, his/her walk-in closets, large bonus/exercise room with built-ins, and a luxurious bath with steam shower, jetted tub, and dual vanities. There is an upper-level laundry room and a finished 3rd floor. The walk-out lower level has a bar, gas fireplace, multiple entertainment areas, TV viewing space with built-in cabinetry, 2-room bedroom suite with bath, and a secured, private room with hidden access. The exquisite backyard offers multiple areas for entertainment, such as Trex decking with both grilling and seating areas, a gas fireplace with stone surround, and retractable awning. There is a huge flagstone patio with a very impressive, free-standing stone fireplace, Tiki bar deck area, water feature, and covered storage space.

In addition to the updates and features of the home, one of the greatest assets about living on Roosevelt Street is the highly sought-after school districts of Bradley Hills ES, Pyle MS and Walt Whitman HS, some of the most coveted in the state. It is also close to downtown Bethesda, with its desirable shopping, restaurants, family entertainment, and nightlife. Whether it's the weekly farmer's market, Imagination Bethesda, summer outdoor movies, seasonal Literary and Arts Festivals, or outside dining and concerts, downtown Bethesda remains the destination of choice for adults and families with many activities to enjoy. Tour the property and home, while envisioning the lifestyle advantages acquired when living at 6010 Roosevelt Street!



### **Scott Matejik** Vice President

*"The Hometown Touch"*

Office 301-654-3200  
Cell 301-442-8200  
Email [Scott@ScottMatejik.com](mailto:Scott@ScottMatejik.com)  
Website [www.ScottMatejik.com](http://www.ScottMatejik.com)

### **STUART & MAURY, INC.**

4833 BETHESDA AVE STE# 200  
BETHESDA, MD 20814  
Office 301-654-3200  
Fax 301-656-6182



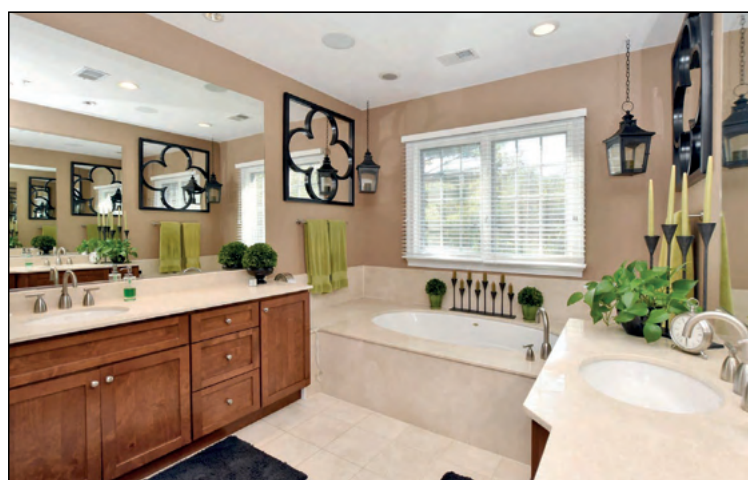




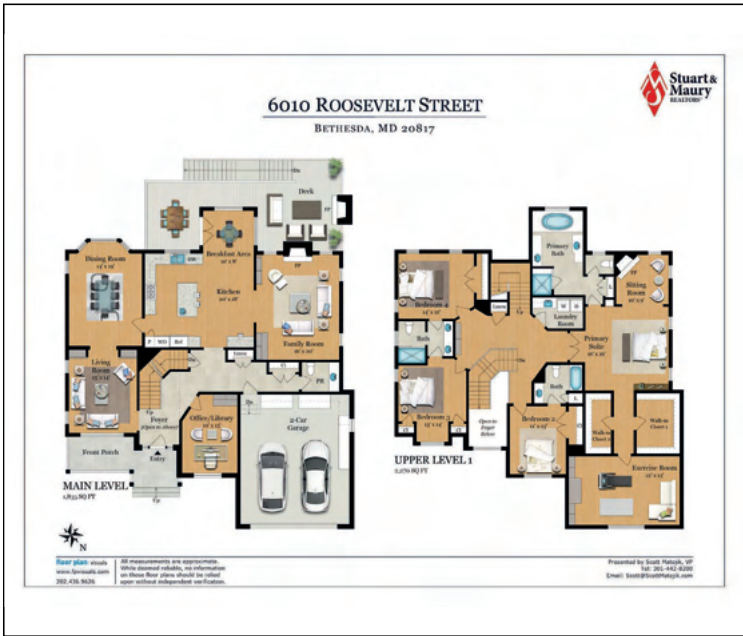














# Features & Amenities

## MAIN LEVEL

- **Two-Story Entrance Foyer** with Travertine marble floor, mahogany wood door with side-light windows, two double-door coat closets with organizers, chandelier, crown and chair molding, wainscoting, recessed lighting, and Palladian window
- **Living Room** with crown and chair molding, wainscoting, built-in cabinetry, audio speakers, and five windows
- **Dining Room** with crown and chair molding, wainscoting, chandelier, recessed lighting, pocket doors, audio speakers, bay window, and two additional windows
- **Kitchen** with granite countertops and custom tiled backsplash, cherry wood cabinetry (pull-out drawers and under cabinet lighting), 6-burner Viking gas cooktop with Thermador hood, oversized KitchenAid 2-door SS refrigerator (ice/water on door), GE SS dishwasher, two Bosch wall ovens (one is convection oven), Dacor microwave oven, double sink, island with breakfast bar and pendant lighting, work desk with matching cabinetry and top, crown molding, recessed lighting, two windows, audio speakers, and breakfast room with light fixture, crown molding, four windows, and French doors to deck
- **Family Room** with crown molding, built-in cabinetry, gas fireplace, recessed lighting, audio speakers, and four windows.
- **Office** with crown molding, built-in cabinetry, audio speaker, recessed lighting, two windows, and glass entrance door
- **Powder Room** with crown molding, oversized vanity and mirror, three light fixtures, and fan
- **Two-Car Garage** with "Garage Tek" storage system and automatic door opener
- **Trex Deck** low-maintenance clad railings, stone gas fireplace, retractable awning, privacy screening, light fixtures, and Weber natural gas grill

## UPPER LEVELS

- **Primary Bedroom Suite** with double-door entrance, tray ceiling, ceiling fan, audio speakers, built-in glass shelves, recessed lighting, two walk-in closets with custom organizing systems, and two windows. Sitting room with gas fireplace, crown molding, light fixture, recessed lighting, and two windows. Private office/exercise room with angled ceiling, chair rail molding, custom cabinetry, Palladian window, light fixture, and recessed lighting
- **Primary Bath** with separate, oversized vanities and mirrors, jetted tub, glass enclosed steam shower with bench, water closet, audio speakers, recessed lighting, fan, tile floor, and three windows
- **Bedroom #2** (middle-front) with crown molding, light fixture, recessed lighting, double-door closet, and two windows. En-suite bath with oversized vanity and mirror, light fixture, recessed lighting, tile floor, and tub
- **Bedroom #3** (front-corner) with crown molding, light fixture, two closets, recessed lighting, two windows, and access to shared bath
- **Full Bath** (shared between BR's 3-4) with dual-sink vanity, oversized mirror, large shower with glass door, tile floor, recessed lighting, fan, light fixture, and window
- **Bedroom #4** (back-corner) with crown molding, ceiling fan, double-door closet, recessed lighting, three windows, and access to shared bath
- **Laundry Room** with granite top vanity, cherry cabinetry with under cabinet lighting, Speed Queen commercial HD washer, GE dryer, sink, tile floor, light fixture, hall linen closet and built-in shelving
- **Bedroom #5** on the top floor has a ceiling fan, carpeting, recessed lighting, two windows, and closet with shelving (2nd HVAC unit in this closet)

## LOWER LEVEL

- **Entertainment Room** with crown and chair molding, wainscoting, gas fireplace, custom built-in cabinetry, wood floor, light fixtures, recessed lighting, closet, audio speakers, two windows, and French doors to backyard and patio. Bar with granite counters, GE Monogram SS refrigerator, sink, wine rack, pendant lights, TV, and walk-in closet with built-in shelving
- **Bedroom #6** a two-room suite with wall-to-wall carpeting, light fixture, recessed lighting, double-door closet, two windows, and access to bath
- **Full Bath** with vanity, oversized mirror, light fixture, tub with ledge, tile floor, and fan
- **Utility Room** with storage area, sump pump, radon remediation system HVAC system, and hot water heater
- **Wine Cellar** with private access behind custom designed, roll-out wall unit and built-in cabinetry in room

## SPECIAL AMENITIES

- Four-sided brick and stone exterior, double-wide concrete driveway, multiple flagstone walkways and patios, front porch, Jeld-Wen windows, and asphalt shingle roof
- Oak hardwood flooring, detailed moldings, handcrafted cabinetry, multiple gas and wood fireplaces, high ceilings, custom painting and window treatments, and extensive recessed lighting and fixtures
- Two-zoned HVAC system with Carrier gas heating, electric central air conditioning, and humidifier, Rudd 75-gallon gas hot water heater (2018), Generac natural gas generator, sump pump, and 400-amp electrical service powered by two Cutler-Hammer panel boxes
- Multiple stone patios, Trex decking with Weber natural gas grill and retractable awning, two free-standing stone fireplaces, water feature with stone waterfall, Tiki bar deck area, outside storage shed, and fenced backyard
- Professionally designed landscaping with mature specimen trees and bushes which include crepe myrtle, dwarf magnolia, oak-leaf holly, and Japanese maple trees, along with English boxwood, oak-leaf hydrangea, fern and azaleas. Landscaping highlighted by extensive accent lighting and yard and gardens serviced by underground irrigation system
- Close to schools, parks, Metro, NIH, Walter Reed Medical Center, as well as shops, nightlife, theaters, and restaurants in downtown Bethesda

**Price:** \$2,395,000

**Age:** Built 2006 & Occupied 2007

**Lot Size:** 8,428 square feet

**Taxes:** \$21,421.04 (2023 Est Tax Bill)

**Legal:** Lot 25; Block 4

**Schools:** Bradley Hills ES, Pyle MS, Walt Whitman HS



**Scott Matejka**

*Vice President*

*"The Hometown Touch"*

Office: (301) 654-3200 | Cell: (301) 442-8200

E-Mail: [Scott@ScottMatejka.com](mailto:Scott@ScottMatejka.com)

Website: [www.ScottMatejka.com](http://www.ScottMatejka.com)



**STUART & MAURY, INC.**

4833 BETHESDA AVE STE# 200  
BETHESDA, MD 20814

*School districts, square footage, or measurements are deemed reliable, but not guaranteed. If school districts are critical, please verify independently*

