

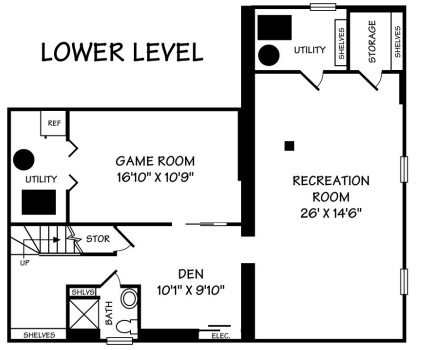
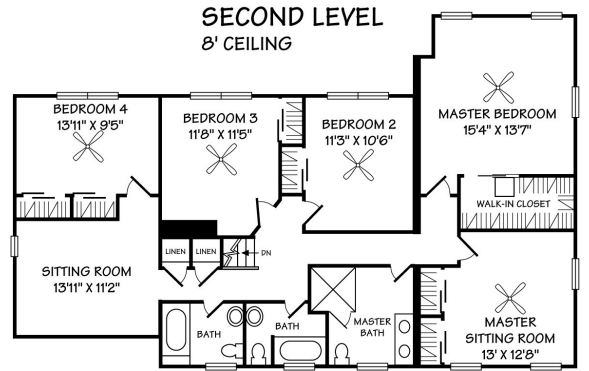
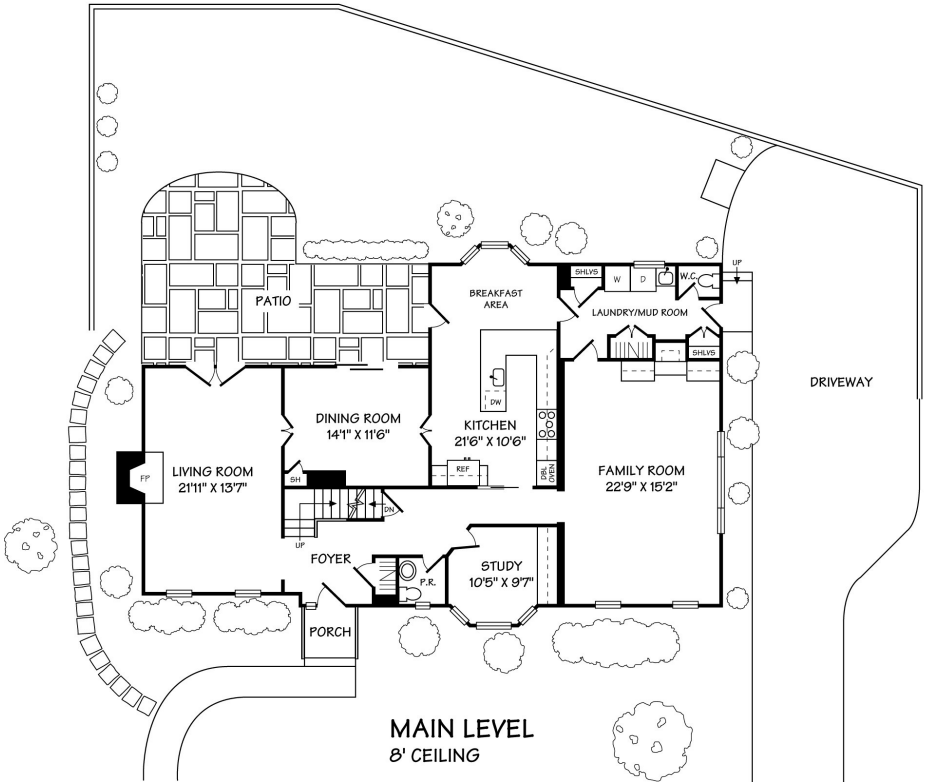


7814 Maryknoll Avenue

BETHESDA MARYLAND 20817

\$975,000

7814 MARYKNOLL AVENUE, BETHESDA, MD
 ©2017 S. MATEJIK
 ALL ILLUSTRATIONS AND DIMENSIONS ARE APPROXIMATE AND MAY VARY FROM ACTUAL STRUCTURE. DIMENSIONS HAVE BEEN ROUNDED. ALL INFORMATION DEEMED RELIABLE BUT NOT GUARANTEED.
 WWW.INTERIORFOOTPRINTS.COM



Located on a 1/4 acre lot, this expanded and updated colonial has 4,300 sq ft of living space. The traditional first floor layout features a family room, den/office and laundry room. The recently updated kitchen offers granite counters, stainless steel appliances and a breakfast area with bay window. The master suite contains a luxury bath, walk-in closet with Elfa shelving and a sitting room. Upstairs features 4-5 bedrooms (including a 2-room suite) and 3 updated bathrooms. There is a finished basement, private yard with patio and extended driveway for multiple cars.

Property Details

Legal: Lot 17, Block 2
 Subdivision: Maryknoll
 Year Built 1962
 Lot Size: 10,837 (1/4 acre)
 Est Tax: \$11,620.44 per year

Public Schools

Whitman High School
 Pyle Middle School
 Burning Tree Elem School



Scott Matejik

“The Hometown Touch”



All information deemed reliable, not guaranteed. If critical, please verify independently.

Scott Matejik

Stuart & Maury, Inc. Realtors
 4833 Bethesda Avenue #200
 Bethesda, MD 20814

Office: 301-654-3200
 Cell: 301-442-8200
 E-mail: Scott@ScottMatejik.com
 Website: www.ScottMatejik.com



Main Level

Entrance Foyer

Entrance foyer with wood floor, coat closet, light fixture and side light window panels.

Living Room (22 x 14)

Dramatic 22 foot living room with custom cherry wood wall paneling and mantle, fireplace, crown molding, two windows, three wall sconces, and French doors to patio.

Dining Room (14 x 11)

Generous sized dining room with wood floor, chair and crown molding, built-in storage cabinets, chandelier, recessed lights, and two windows.

Kitchen (22 x 10)

A 2012 renovated kitchen with tile floor, extensive wood cabinetry, granite counter tops, stainless-steel appliances (GE Profile double wall convection ovens, GE Profile 5-burner cooktop with hood fan, Bosch dishwasher, Samsung side-by-side refrigerator with ice/water on door, and extra large "farmhouse" sink), pocket door, recessed lights, breakfast bar, table-space area with bay window, two skylights, chair rail and wainscot molding, and door to patio.

Family Room (23 x 15)

Adjacent to kitchen with wood floor, crown molding, custom built-in, recessed lights, four windows, and large picture window.

Laundry/Mud Room

Laundry/mud room with tile floor, Maytag front-load (high-efficiency) washer and gas dryer, utility sink, food pantry, two storage closets, ceiling light fixture, window, water closet, and exit to driveway.

Den/Office (10 x 10)

Den/Office with wood floor, custom built-in cabinetry, bay window, and recessed lights.

Powder Room

Powder room with tile floor, pedestal sink, mirror, light fixture, and window.

Upper Level

Master Bedroom Suite (15 x 14 and 13 x 13))

Master bedroom with wood floor, ceiling fan with light, three windows, large walk-in closet with extensive Elfa shelving and track lighting), and additional sitting room (with wood floor, ceiling fan with light, three windows, and two closets).

Master Bath

Master bath renovated in 2012 with tile floor, oversized double sink vanity, walk-in shower with multiple heads, two medicine cabinets, two light fixtures, ceiling light with fan, and window.

Bedroom 2 (11 x 11)

Bedroom with wood floor, ceiling fan with light, large closet with mirrored door, and oversized window.

Bedroom 3 (12 x 11)

Bedroom with wood floor, ceiling fan with light, large closet with mirrored door, and oversized window.



Living Room



Master Bedroom



Master Bathroom



Kitchen



Family Room



Office or Den

Full Bath #2

Renovated hall bath (2012) with tile floor and walls, vanity, tub, medicine cabinet, two light fixtures, and window.

Bedroom 4/5 (14 x 9 and 14 x 11)

Two room bedroom suite with wood floors, two large closets with mirrored doors, two additional storage closets, ceiling fan with light, two ceiling lights, and three windows.

Full Bath #3

Renovated en-suite bath (2012) with tile floor, oversized vanity, tub, medicine cabinet, built-in shelving, two lights, and window.

Lower Level

Recreation Room (26 x 14)

Family room with Berber carpeting, recessed lights, storage closet with shelving, and two windows.

Full Bath #4

Full bath with tile floor, pedestal sink, shower, medicine cabinet, light fixture, built-in shelving, and window

Game/Storage Room (17 x 11)

Game/storage room with painted concrete floor and recessed lights.

Two Utility Rooms

Two separate utility rooms housing the HVAC systems and hot water heaters (one room has a window).

Additional Amenities

- 2-Zone HVAC systems (2016-main/2010-addition), two hot water heaters (2012) and upgraded electric service wire.
- Extended concrete driveway with parking for multiple cars and with easy access into house via the laundry/mud room.
- Asphalt shingle roof (portion of rear roof replaced in 2015, along with 2 new skylights in kitchen/breakfast area).
- Professionally landscaped yard with flagstone patio (2007) and mature plantings.
- Refinished and new wood floors, detailed moldings, custom built-in cabinetry and paneling, replacement Andersen windows (except basement), custom window blinds, and replacement storm and exterior doors.
- Walking distance to some of the finest local public schools in the area and close to downtown Bethesda. Also very convenient to DC, Northern VA, airports, and major transportation routes.
- Updated bathrooms (2012) and kitchen (2012), along with new Maytag front-load washer and gas dryer (both 2012).
- Only the 2nd owner of this wonderful home since it was built in 1962.